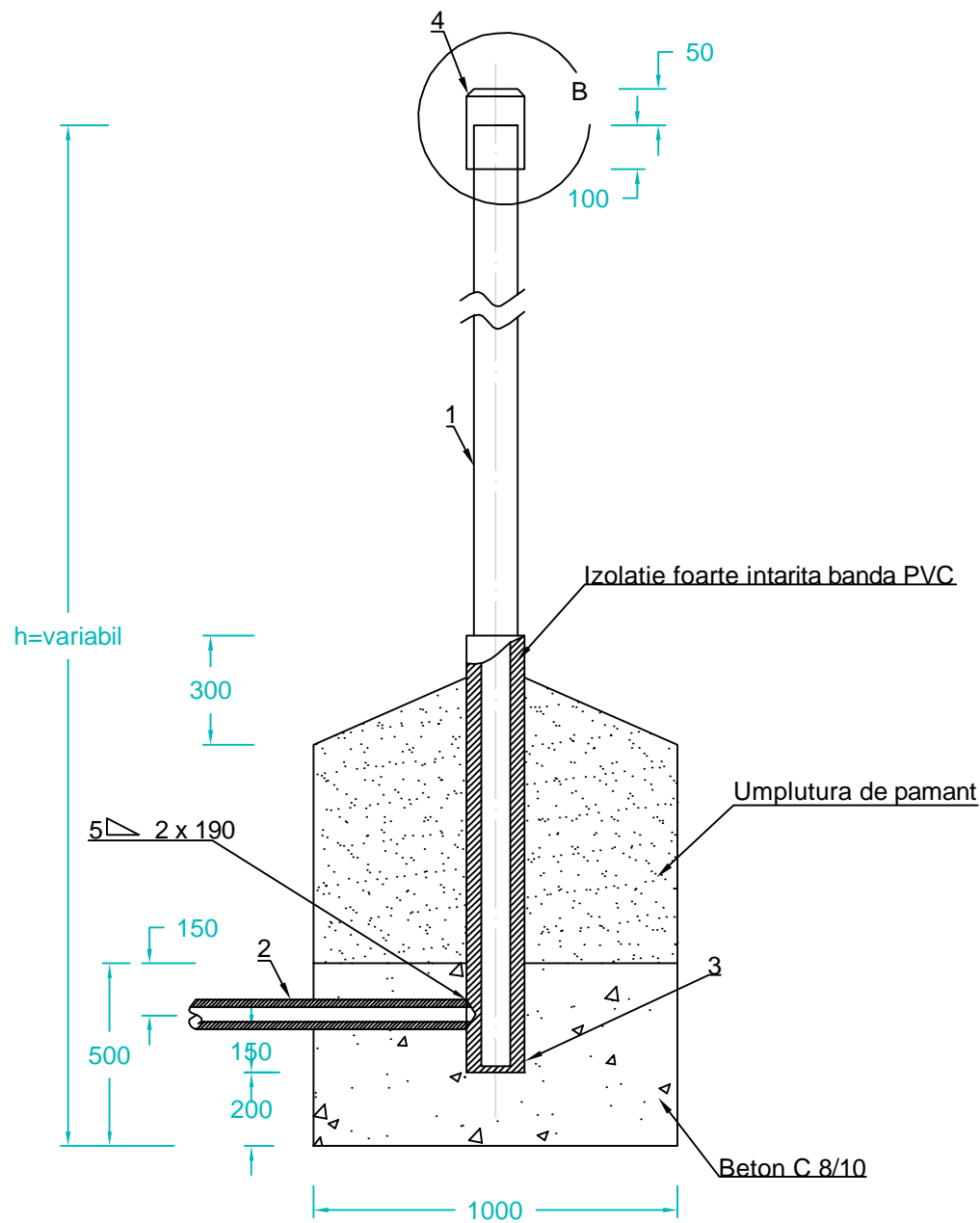
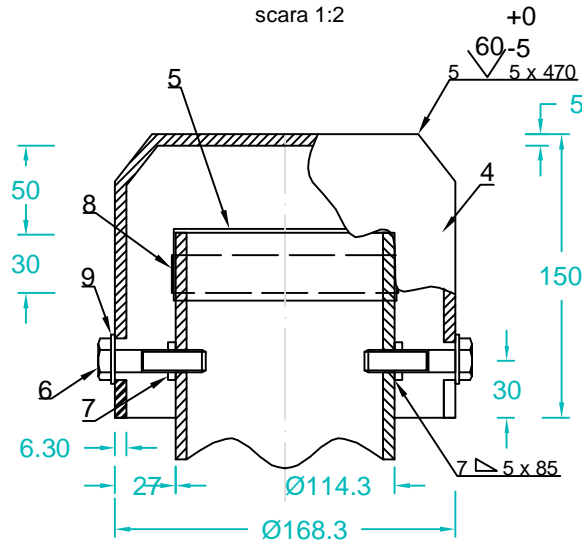


DETALIU DISPOZITIV DE AERISIRE

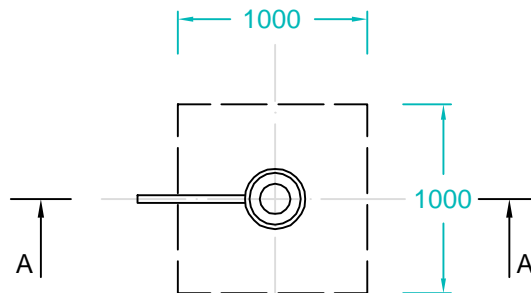
Sectiune A - A
scara 1:20



Detaliu B
scara 1:2



Vedere in plan
scara 1:2



h (m)	3.90m	4.40m	4.90m	5.40m	5.90m	Volum beton
Greutate (Kg)	74.90	83.20	91.50	99.80	108.10	0.50m³ / buc

Poz.	DENUMIRE	STAS	BUC.	MATERIAL	OBSERVATII
1	TEAVA AERISIRE	SR EN ISO 3183/2013	1	L 245N	Ø114.3 x 4 x h
2	RACORD	SR EN ISO 3183/2013	1	L 245N STAS 8185-88	Ø60.3 x 3.5mm
3	FUND DREPT		1	S235 JR STAS 8183:80	5 x 120 x 120 mm SR EN 10029:2011
4	CAPAC	SR EN ISO 3183/2013	1	L 245N	Ø168.3 x 6.30 x 150
5	SITA "DAVIS"	SR ISO 3310-1:2000	1		140 ochiuri /cm²
6	SURUB M16 x 46	SR EN ISO 4016:2011	2	S235 JR SR EN 10083-2:2007	
7	PIULITA B M16	SR EN ISO 4034:2013	2	S235 JR SR EN 10083-2:2007	
8	COLIER FALTUIT		1		Ø30 x 1.0 x 350mm
9	SAIBA GROWER N16	SR 7666-2:1994	2	S235 J	

NOTA:

- Pentru fundatii se va folosi beton C 8/10
- Umplutura de pamant va fi bine compactata in straturi de 10-20 cm
- Sita "Davis" se compune din doua tesaturi suprapuse din sarma de 0.3.....0.4 mm grosime si 144 ochiuri/cm².
- Tesatura din sarma aleasa 0.5 corespunde conditiilor de mai sus avand sarma cu grosimea 0.34 mm cu 142 ochiuri/cm².
- Sudurile vor fi executate electric cu electrozi E35.2 B SR EN 499.

Verificator/ Expert	Nume	Semnatura	Cerinta	Referat / Expertiza Nr. / Data
S.C. SNIF PROIECT S.A. Targoviste Numar de inmatriculare J15/925/2005				Beneficiar: CONPET S.A. PLOIESTI
Specificatie	Nume	Semnatura	Scara: 1:20 1:2	"Inlocuire conducta de transport titei 6 5/8" Ochiuri-Moreni, in zona statie Ochiuri - traversare parau Slanic, in lungime de cca. 600m si in zona islaz Ocnita in lungime de cca. 3000m (total cca. 3600m) si refacere instalatie de lansare curatitoare din incinta Statiei Ochiuri"
Sef proiect	Ing. Costea Paul			Faza PT+CS+DE
Desenat	Ing. Radu Florin		Data: 2015	
Proiectat	Ing. Costea Paul			Detaliu dispozitiv de aerisire
				Pr. nr. 310
				Pl. nr. 17